



*Best Service. Best Value. Best Advice.*

[www.lincolnsentry.com.au](http://www.lincolnsentry.com.au)



Call 1 800 777 758 (within Australia) or visit [www.breezway.com.au](http://www.breezway.com.au)

In Australia, louvres beside swimming pools must have restricted opening to comply with the Australian Standards for swimming pool safety. For further information contact breezway.



Best Service. Best Value. Best Advice.

# THE BREEZWAY IDEAS BOOK







# Free air conditioning in every room of your home



Houses heat up. Sun on the roof and before long you've got a hot box. A hot box that's often much hotter inside than the air outside.

To counter this you can install electric air conditioning. Okay if you like stale air.

Alternatively, you can keep your home comfortably cool, almost every day of the year, simply by opening it up.

Breezway Louvre Windows let you do this with stylish design and elegant simplicity. More than any other window option they allow you to fully embrace the cool change. To invite in the refreshing breezes during or after a rain shower.

Essentially, Breezway Louvre Windows help you to create a living space that works with nature rather than against it.

A light and airy place where, through louvres wide open, you can hear the lovely morning birds and smell the frangipani.

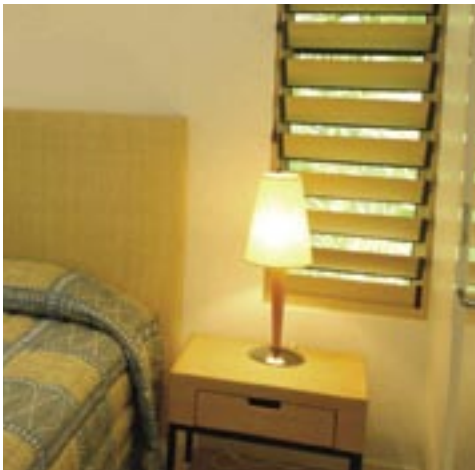
This is what we mean by free air conditioning. And you can have it in every room of your home.



*breezway*<sup>™</sup>  
LOUVRE WINDOWS



# Let's start with the bedroom



What every bedroom needs is a breath of fresh air. And the best way to get lots of fresh air inside is with Breezway Louvre Windows.

Fully open, the louvre blades are close to horizontal. This means they provide very little resistance to the air entering through the window opening.

In effect, you get twice as much ventilation as you would with a same sized sliding window or double hung window.

Compared with top-hinged wind-out type windows, the air flow control is even greater.

Concerned about wind and rain? The patented 'living hinge' design of Breezway Louvre Windows ensures that, when fully closed, they seal more completely than any other louvre window on the market.

In fact, the air infiltration rating for our louvres is 60% better than the standard required for residential windows, providing a tighter seal.

Importantly, Breezway Louvre Windows are now available with a key lock mechanism so you and your family can sleep tight at night.

Tip: For those with limited space for a window (eg. in a small bedroom) Breezway Louvre Windows provide good ventilation through a much smaller window opening.



*breezway*  
LOUVRE WINDOWS



# Lounging about

Breezway Louvre Windows in the lounge room ought to be compulsory.

Okay, we're a little biased about that. But think about it. Is there a better, cheaper or more stylish way to have complete control of the air flowing through your living area?

We think not. And most leading architects and designers agree.

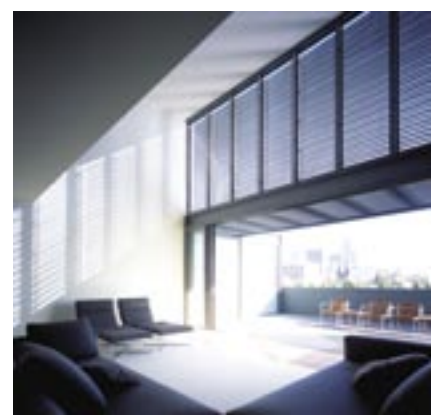
Worried about mosquitoes or other flying insects? Insect screens are available.

Choosey about colours? Breezway gives you more matching frame, handle and clip options than anyone else.

Nosey neighbours? The choice of timber and aluminium blades means you can have your fresh air and your privacy, too.

Have a good look at the enormous bank of louvres in the main photo and tell me you wouldn't want a living area like that in your home.

*breezway*  
LOUVRE WINDOWS™





# Walkways and what not

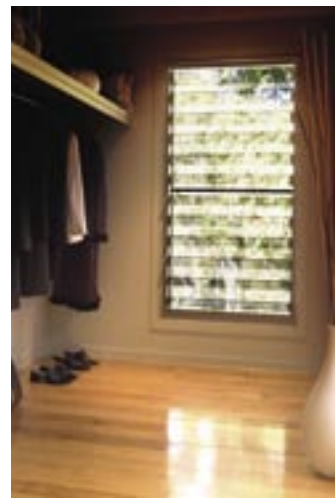
Did you know that the air inside the average home is around 5 times as thick with pollution as the air outside?

Vapours, pet odours, the wicked waft of kids' sneakers, cooking smells and a whole bunch of other airborne particles combine to make the average home smogulous in the extreme.

Breezway Louvre Windows in stairways, in walk-in-robos, adjacent to landings, at corridor ends, in toilets, in garages and up high in lofted areas are a sensible and stylish way to vent and replenish the air you breathe.

Tip: Breezway Louvre Windows in timber are great for patio enclosures or privacy screens. Use a wall of Breezway Louvre Windows as a feature divider.

*breezway*  
LOUVRE WINDOWS™







# Wet wet wet

Steam is good for locomotives, but not so good in your bathroom. Install exhaust fans if you wish, but really, the best option is to include louvres in all of your wet areas.

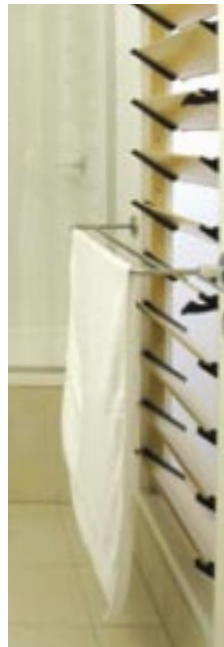
Clever architects and designers are now putting Breezway Louvre Windows (with timber or aluminium blades for privacy) behind towel rails to fast forward the drying process.

We make little louvres for installation near vanity mirrors to stop them fogging up.

Our louvres in laundries also make sense, if only because they help stop the mould growing.

By the way, when it's blowing a gale outside, nothing holds a candle to Breezway Louvre Windows, the most wind and rain resistant product of its kind anywhere in the world.

This is due to our patented 'living hinge' mechanism which ensures an extremely firm fit between the louvre clips and channels to resist water and air leakage.



*breezway*<sup>™</sup>  
LOUVRE WINDOWS







# If you can't stand the heat get some louvres in the kitchen

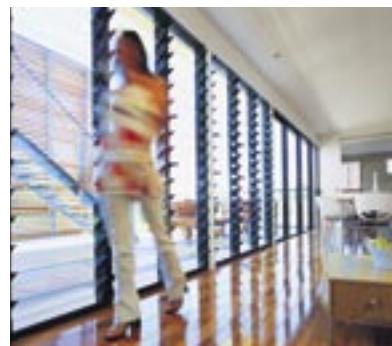
Beetroot may taste nice but it smells pretty ordinary when it's cooking. Ditto cabbage, cauliflower and fish.

It goes without saying that a set or two of Breezway Louvre Windows are a wise inclusion in every kitchen. They'll get rid of the smells and help dissipate the heat of your next hot pot.

By the way, the stylish handles on our louvres can be positioned to the left, to the right, up high, or down low. This makes louvres easy to open in hard to reach places.

As you know, hot air rises. So if you have a lofted ceiling in your kitchen, you might consider setting some louvres up high to help keep the air sweet.

Tip: Breezway Louvre Windows set on opposite walls in a kitchen - or any other room for that matter - create a breezeway and maximise cross ventilation. This is especially the case if one of the walls faces the prevailing wind in your area.



*breezway*  
LOUVRE WINDOWS



They don't make  
louvres like  
they used to

*breezway*  
LOUVRE WINDOWS



## Cyclone rated for wind & rain

Forget those leaky old rusty steel louvre windows you grew up with. New generation Breezway Louvre Windows are rated up to 3000 Pascals Design Wind Pressure and up to 500 Pascals Water Penetration for cyclone areas by NATA (National Association of Testing Authorities).

## Optional insect & security screens

Worried about mosquitoes and other flying insects? Breezway Louvre Windows are available with wide frames that can be fitted with both insect and security mesh screens.

## Glass, timber & aluminium blades

Privacy isn't an issue if you go with obscure glass, timber or aluminium blades. Consider glass at the top to let the light in with timber or aluminium blades below.

## New lockable louvre windows

Breezway Louvre Windows are now available with an optional key lock mechanism. Great if you have kids, a two storey home, or a holiday home.

## Other key features

- Tight seal due to patented 'living hinge' and drainage channel design.
- Extensive clip and frame colour options. Five times more colour matches than our competitors.
- Each order is tailor made.
- Superior aesthetic design with clips fitting snugly together that are easy to clean.
- Ergonomically curved handle over one year in development and tested for 50000 cycles.
- Handle may be placed left or right of frame, up high or down low for easy reach.
- Interior wash feature - simply open for easy to clean windows and clips.
- 7 year warranty.
- World-wide distribution network.
- Exported to over a dozen countries.
- Breezway is an Australian owned company.

